


## The Transformation Transfer Initiative (TTI) Model

Does your organization have a critical health priority that needs a proven vehicle for greater impact?

NASMHPD encourages organizations and other non-profits to consider using the TTI Model to incentivize state and local systems to give attention to and take action on your priorities and areas of focus.

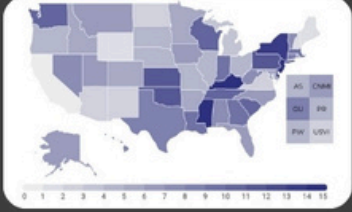
### What is the TTI Model? Purpose, Scope, and Vision

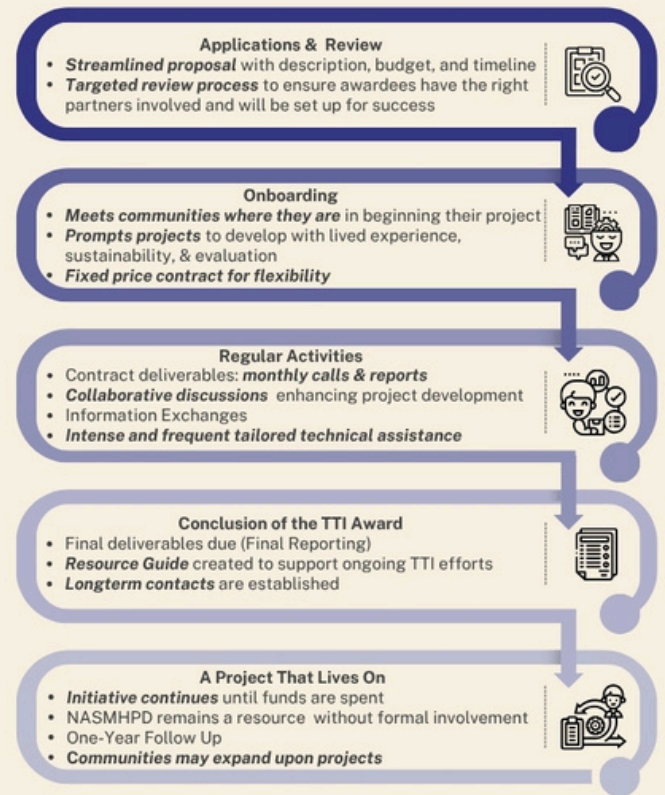
- The Transformation Transfer Initiative (TTI) is one of the most impactful initiatives that NASMHPD has had the privilege to work on with states and territories. In 2007, NASMHPD created the TTI to assist states in transforming their mental health systems of care. The TTI provides small competitive funding awards and intensive technical assistance to U.S. States, Washington D.C., and the Territories to identify, adopt, and strengthen innovative initiatives, chosen and prioritized by the funder.
- Knowing state staff are incredibly overloaded with little bandwidth for proposal development, one of the goals of the TTI Model is to provide ease in all aspects of the award for state behavioral health agencies to succeed.
- To apply, states and territories are asked to provide a short (3 pages or less) proposal, with a description of the project, a budget, and timeline. The proposals are then reviewed by a diverse group of clinical, non-clinical peers, people with lived experience, and others to ensure a broad array of perspectives and the right fit for each TTI topic. As soon as the incoming cohort is finalized, the TTI team begins a process to ensure the success of each project, prompting awardees to consider lived experience, evaluation, and sustainability in the early stages of



### TRANSFORMATION TRANSFER INITIATIVE (TTI) MODEL

The TTI model provides a flexible award opportunity to states, territories, and communities with minimal requirements. In recognizing the unique and complex needs of behavioral health systems, NASMHPD fosters a wide range of experts, including voices of lived experience, state behavioral health agency experts, and subject matter experts; NASMHPD also maintains a wide network of technical assistance resources, including data and evaluation specialists, crisis mapping organizations, and more.





development. The final stage of this process is the completion of a fixed price contract, allowing recipients to continue to use their funds on a timeline that suits their initiative, well past the end of award requirements.

- One goal of the TTI Model is making sure that state staff spend the bulk of their limited time on the actual project achieving robust outcomes rather than jumping through hoops for us. Thus, the deliverables are minimal: one monthly call and one monthly report. This allows us to keep our funder updated on the progress of the project and ensure that state staff have the time to spend on the actual project to achieve great success.
- This set up of the TTI award allows states to quickly begin their work using the intensive technical assistance provided by NASMHPD. The TTI Model allows for the state to own their project which also boosts outcomes. NASMHPD's role is to support the state work.

## Unique Value of NASMHPD's TTI Team

The TTI team meets state teams where they are to wrap a myriad of supports, resources, intensive TA, and legwork around them on a critical project. With national expertise and view, the TTI team is able to assist the state team to assess and organize for success. Being a conduit to other states with proven track records facilitates peer-to-peer expert learning. States receive:

- One-on-One TA to help brainstorm successful strategies and then hands on efforts to assist the state move forward
- Connection to national SMEs
- Connection to In-House Subject Matter Expertise in the following categories:
  - Trauma-informed care, faith-based community services, language and accessibility, children and families, peer support and recovery services through lived experience voices, jail and emergency department diversion, mobile crisis response, communications/marketing, policy and advocacy, and supported housing
- In partnership with the NASMHPD Research Institute (NRI), the TTI team also assists in data collection and evaluation components of projects
- Lessons learned from other states
- Connection to other states that have done similar work
- A nationally known entity to provide the gentle nudging to keep a project on point and on time
- Professional, organizational and emotional support helping state staff amidst their overextended schedules

## Proven Track Record

We have assisted states in achieving outcomes in many areas including workforce development, emergency mental health services, programs to support forensically involved populations, embedding peers in crisis systems, justice systems, suicide prevention for first responders, youth peers in youth suicide prevention work, crisis workforce wellness efforts, expansion of mobile crisis teams, expanding interventions for youth with high acuity needs, mental health services for veterans, and supported housing.

## Why Invest in the TTI Model?

- By setting the TTI topic, you can prime the work you would like done at the state systems level focused on your organization's mission and priorities.
- The TTI project will develop a blueprint that can be marketed and replicated by other states focused on your priority areas.

## Can We Assist You?

To inquire about contracting with the TTI Experience, contact David Miller, Senior Operations and Project Director, at [david.miller@nasmhpd.org](mailto:david.miller@nasmhpd.org) or (703) 399-6892.

[nasmhpd.org/tti](https://nasmhpd.org/tti)

*"The technical assistance we have received from NASMHPD has been invaluable for the work that is currently happening and is being planned through this TTI [award]. The technical assistance we have received, from data collection to program implementation, as well as reaching out to partners across the country for guidance on how to develop procedures to expand our work, has allowed us to lay a foundation for the sustainability of our work beyond the life of this [award]."*

**– Previous TTI State Team Lead**